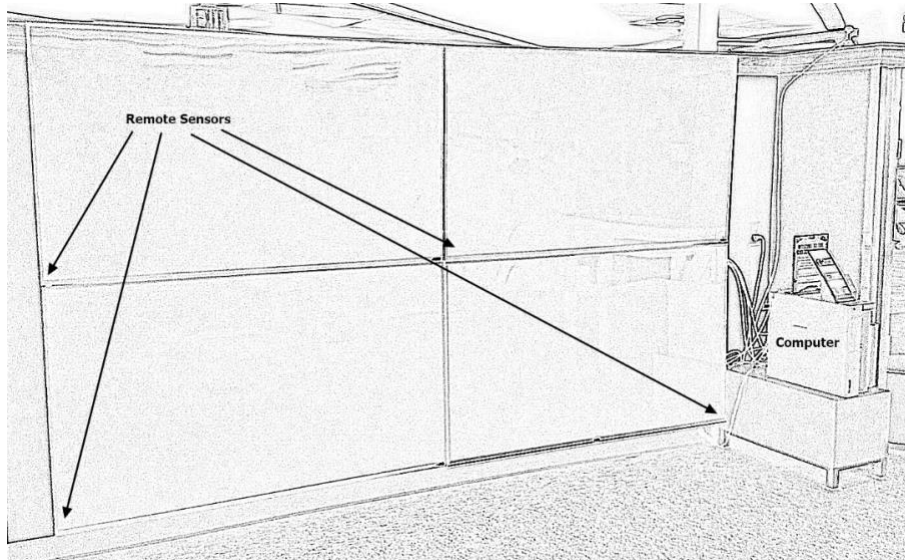


Starting Your VR Session

1. Turn on monitors (with supplied remote) and computer if not already on.



2. Turn on supplied wireless keyboard and use wireless keyboard to sign into 'cyberdiscovery VR users' account.
 - a. Username: .\vr
 - b. Password: 4libraryvr!

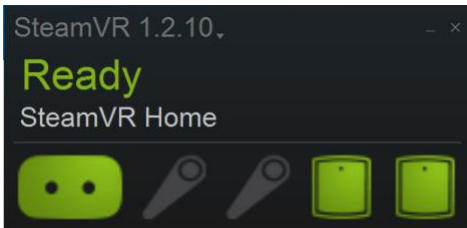
3. Connect VR headset to battery pack and turn on battery pack.



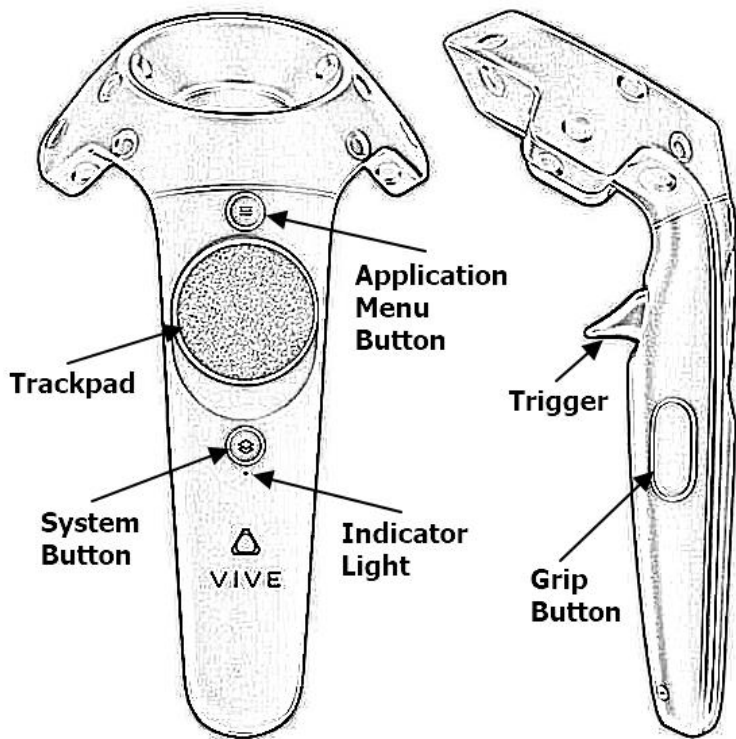
4. Double-click Steam VR shortcut in upper left corner.



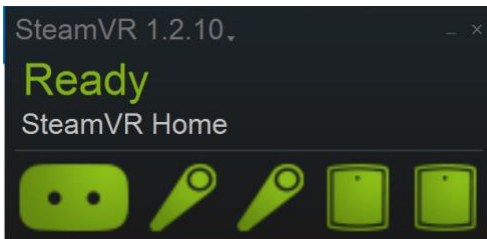
5. Wait for Steam VR window to appear.



6. Turn on both controllers by pressing and holding the System Buttons.

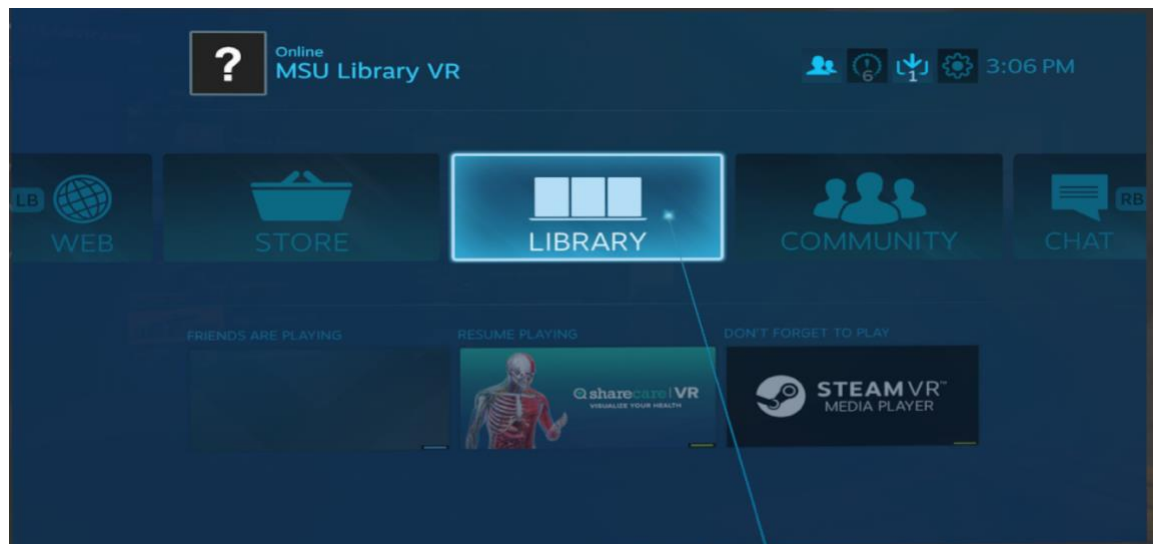


7. SteamVR window should now show all components in green.



Running a VR Application

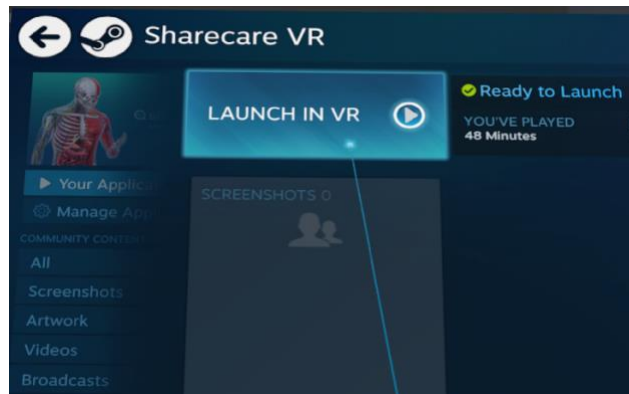
1. Put on the VR headset.
2. Click a controller System Button.
3. Point controller laser pointer at Library and squeeze trigger to select it.



4. Select VR from Browse section on left side of Library window.



5. Select desired application and then select LAUNCH IN VR or PLAY IN VR.
 - a. Note, you can scroll up and down through application list by sliding your thumb up and down on controller trackpad.





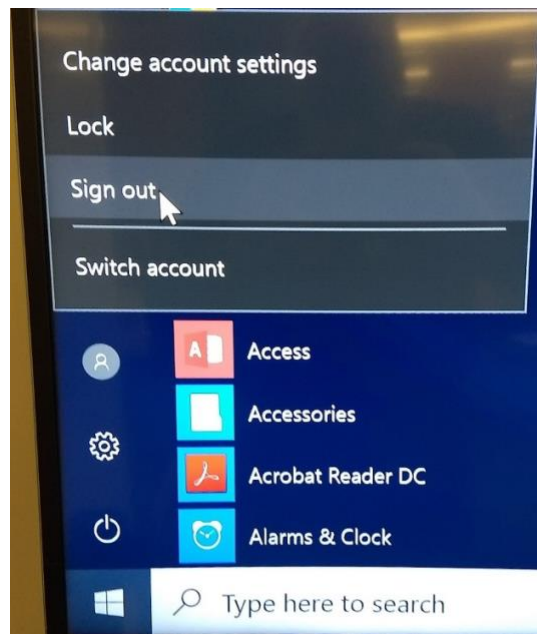
6. After application launches, look at controllers with VR headset on to see if hints are displayed.
7. To change audio volume, click System Button and adjust volume control in lower right corner of System window.
 - a. Click System Button again to go back to application.
8. To exit application, click System Button and select Exit Game or Go Home.



Ending Your VR Session

1. If Windows taskbar is not displayed along bottom edge of top left monitor, try one of the following steps to make it appear:
 - a. Press Windows key on wireless keyboard -or-
 - b. Using trackpad on wireless keyboard, hover mouse pointer near bottom left corner of monitor.
2. After Windows taskbar appears, use wireless keyboard to:

- a. Click Windows icon. 
- b. Click person icon. 
- c. Click 'Sign out'.
- d. You can select 'Sign out anyway' to sign out more quickly if Windows prompts you with that option.



3. Turn off wireless keyboard.
4. Disconnect battery pack from VR headset.
5. Return VR gear to Service Desk.

Troubleshooting

1. If you run into problems with the VR system, sign out using Steps 1 and 2 of 'Ending Your VR Session' and then follow all the steps for 'Starting Your VR Session' and 'Running a VR Application'.