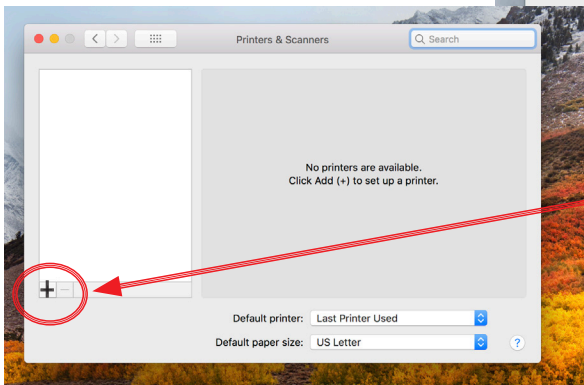
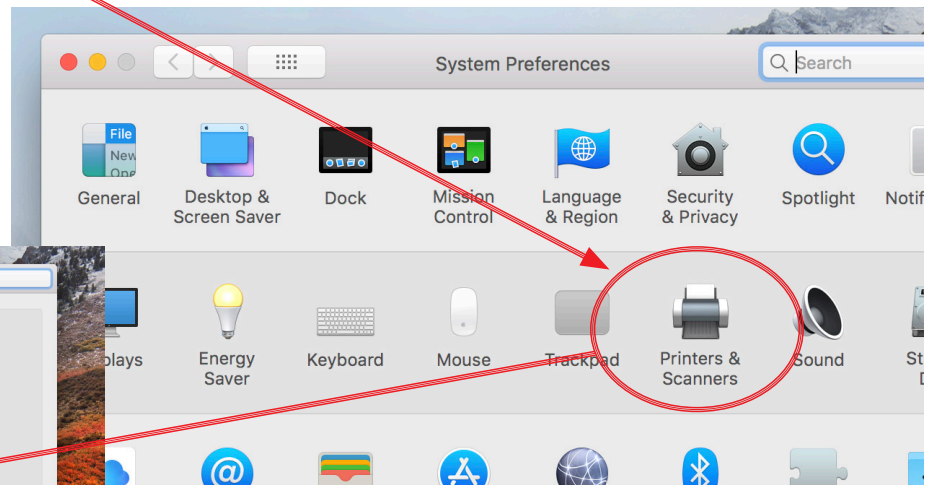


1) Make sure you are connected to the **MSU Secure Network**.

2) Click on the Apple Select System Preferences.

3) Click on Printers & Scanners



4) Click the + button

5) Click the IP tab

6) Address : cicada.msu.montana.edu

7) Protocol : Line Printer Daemon-LPD

8) Queue: blackandwhite

9) Name: cicada.montana.edu

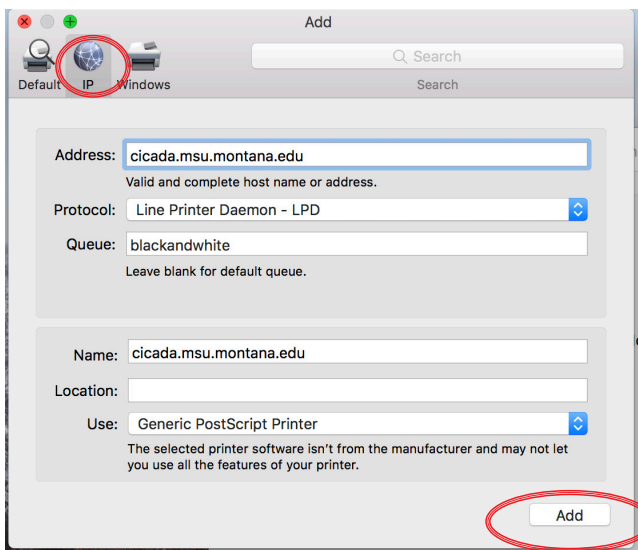
10) Use Generic PCL Printer

11) Select Duplex

If you want to use color printer use the following:

Address: pss2.lib.montana.edu

Queue: librarycolor



12) The printer should display in your printer list.

